

User Manual-330



Announcements & Reminder.....	01
1. Configuration.....	02
2. Package.....	03
3. Installation Instructions.....	05
4. Operation Guide.....	09
5. After Sale & Support.....	14
6. Mortise Lock List.....	15

Thank you for your trust.

Announcements & Reminder:

Thank you for choosing this product. In order to correctly use the lock and nip in the bud, please carefully read the instruction and keep properly to look up.

1.Configuration



Fingerprint



Password



ID Card



Mechanical Key



Super C Class
Cylinder



304 Stainless Steel



OLED Display



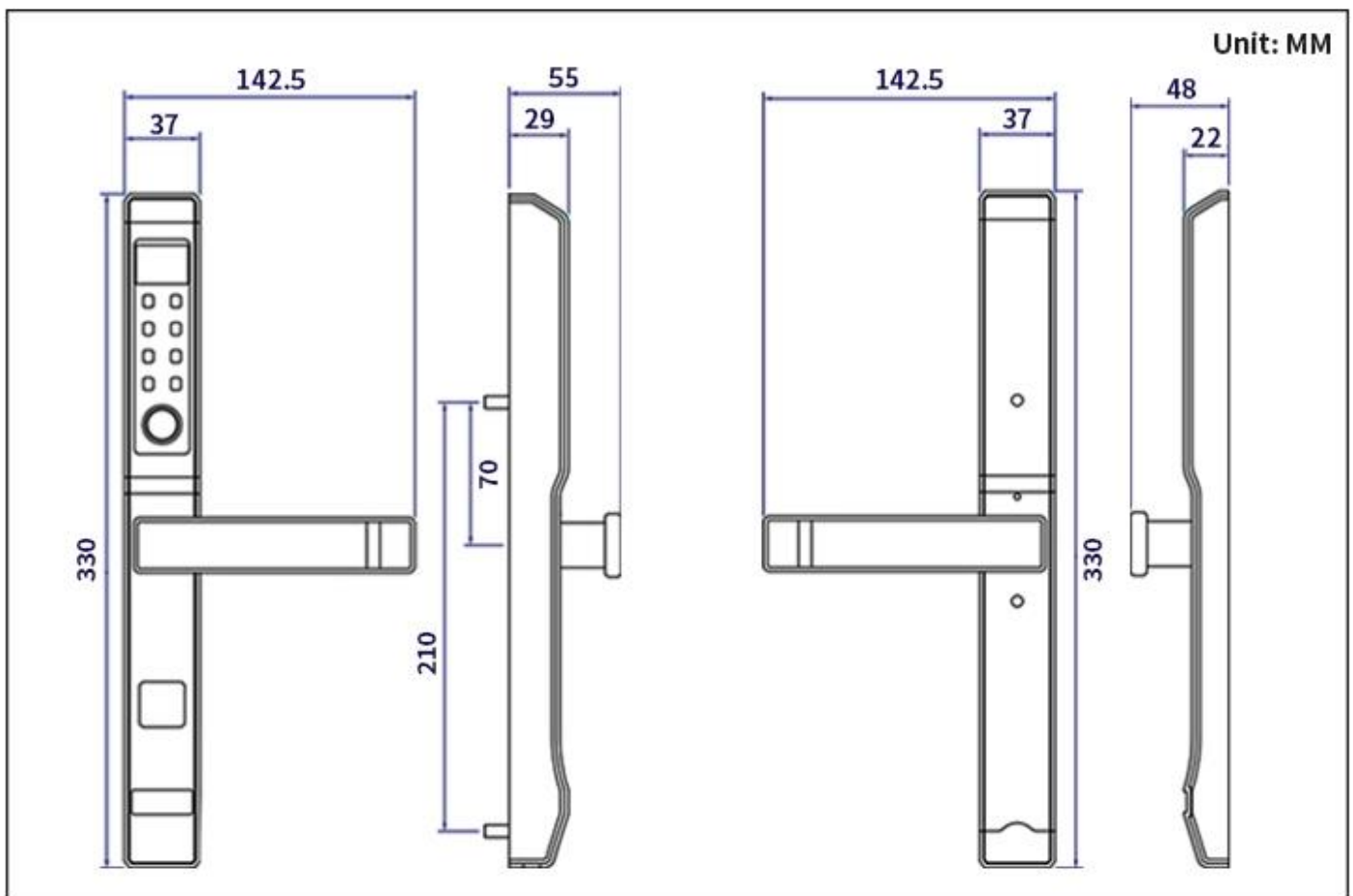
Low Power Alarm



1.1. Parameter

1	Product Name	Fingerprint Door Lock	9	Battery	4 pcs AA Alkaline Batteries
2	Main Material	SUS304	10	Emergency Power Supply	Mobile Charger
3	Size(mm)	L330mm*W37mm*H65mm	11	Power Consumption	Static Current: <20 μ A; Dynamic Current:<200mA
4	Optional Color	Silver/Black/Gold/Red Bronze	12	Screen	OLED
5	Unlock Way	Fingerprint/Card/Password/Key	13	Working Temperature	-38°C to +60°C
6	Cylinder	Super C-class cylinder	14	Working Humidity	20%-93%
7	Capacity	100 fingerprints 200 cards 1 group code	15	Suitable Door	Aluminum Door/ Wooden Door/ Stainless Steel Door/ New Material(Steel-Plastic) Door
8	Language Support	English OR Chinese	16	Door Thickness	38mm to 100mm

1.2. Dimensional Drawing



2.Package

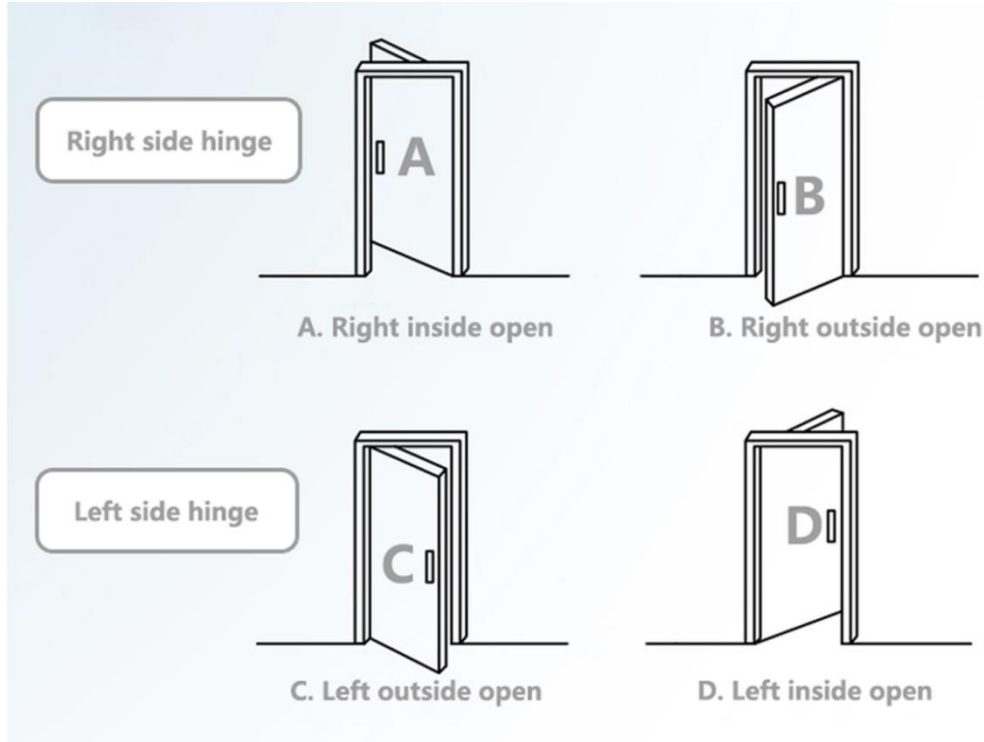


Item No.	Products Name	Quantity	Item No.	Products Name	Quantity
1	Front Panel	1	9	Short Sleeve Nut	2
2	Back Panel	1	10	M5 Short Screw	2
3	Mortise	1	11	4mm Allen Key	1
4	Strike Plate	1	12	3mm Allen Key	1
5	RFID Card	3	13	Locating Sleeve Nut	1
6	Mechanical keys	3	14	M4 Self-tapping Screw	4
7	Long Sleeve Nut	2	15	Spindle	1
8	M5 Long Screw	2			

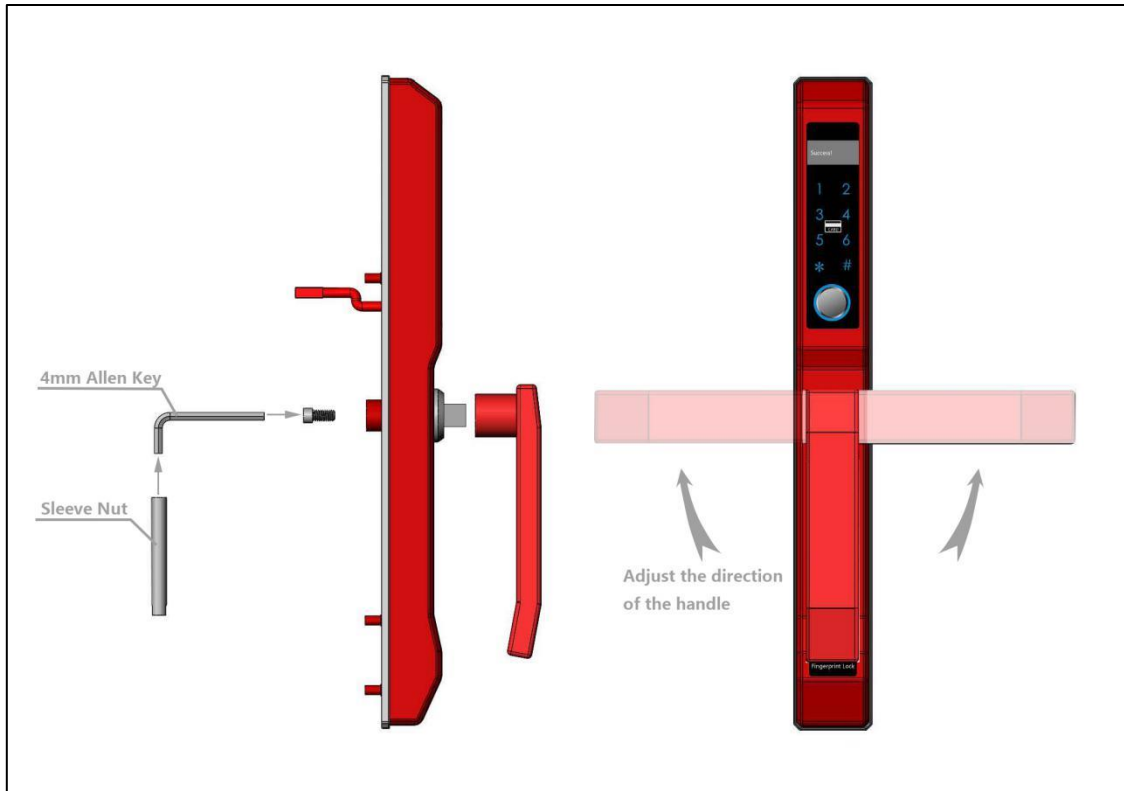
3.Installation Instructions

Step 1: Confirm the opening direction of the door

- Stand outside and face the door to confirm the opening direction of the door lock. (P-1)
- Adjust the handle direction of the lock and tighten the handle screws.(P-2)



P-1

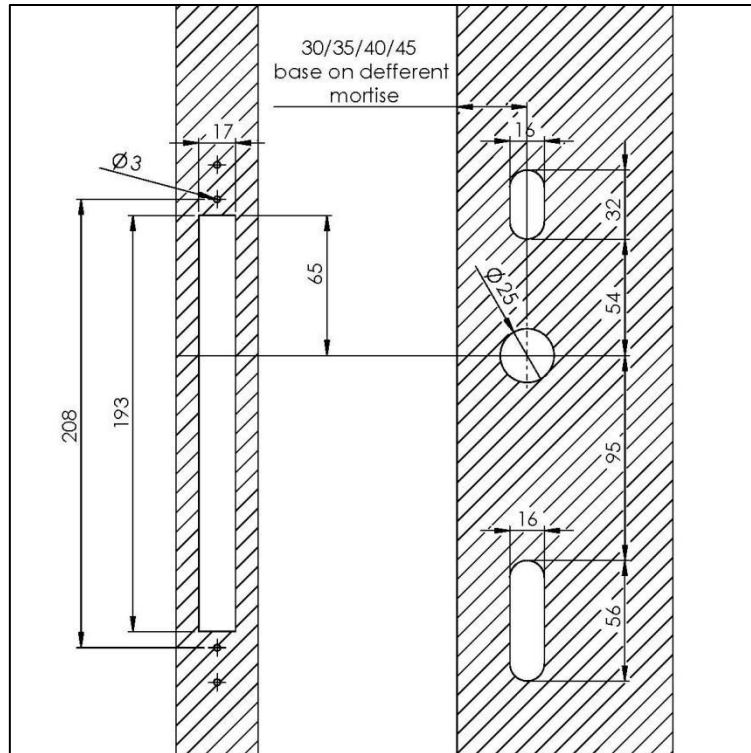


P-2

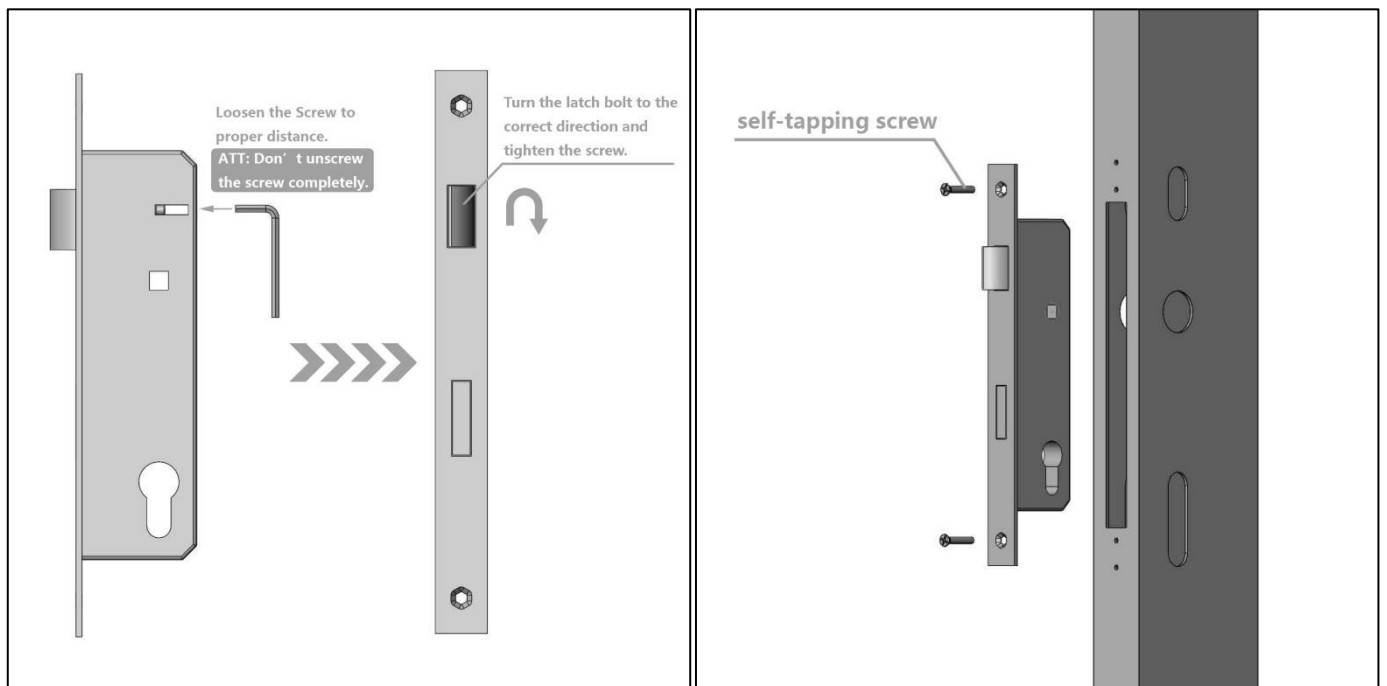
Step 2: Install the mortise

- Drill holes and grooves in the door according to the installing drawing. (P-3)
- Adjust the latch bolt of the mortise in the correct direction base on the opening direction of the door. (P-4)
- Install the mortise in the door. (P-5)

ATT: Check the attachment for more mortise in Page 15.



P-3

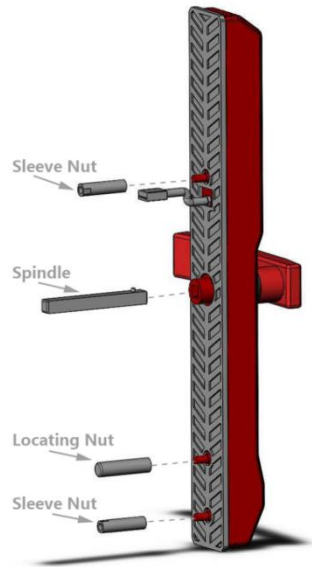


P-4

P-5

Step 3: Prepare the front panel

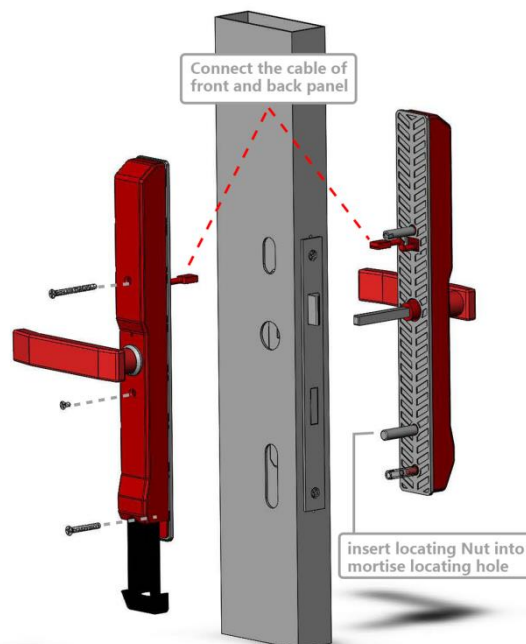
- Use portable grinder to cut the square axis into suitable length according to the thickness of the door and then insert in the square hole of the front panel. ATT: The regular length of the spindle is 25mm-30mm longer than the thickness of the door.
- Fix the connecting sleeve nut and locating sleeve nut onto the front panel. (P-6)



P-6

Step 4: Install the lock panel on the door

- Put the spindle of the front panel in the square hole of the mortise and insert locating sleeve nut to the locating hole of the mortise.
- Connect the cable between the front panel and the back panel.
- Adjust the position between the lock and door and tighten the screws. (P-7)

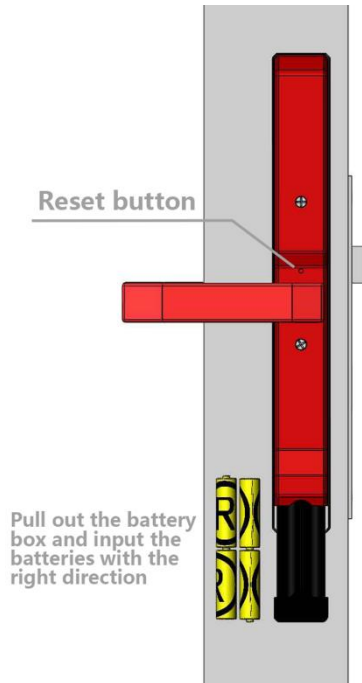


P-7

Step 5: Install the batteries and RESET the lock

- Put the batteries in the power box in right position. (P-8)
- Press the reset button until hear 10 times “bi”, when the screen display “Attention!! Factory Set??#Confirm”, press “#” to clear all the user information of the lock.

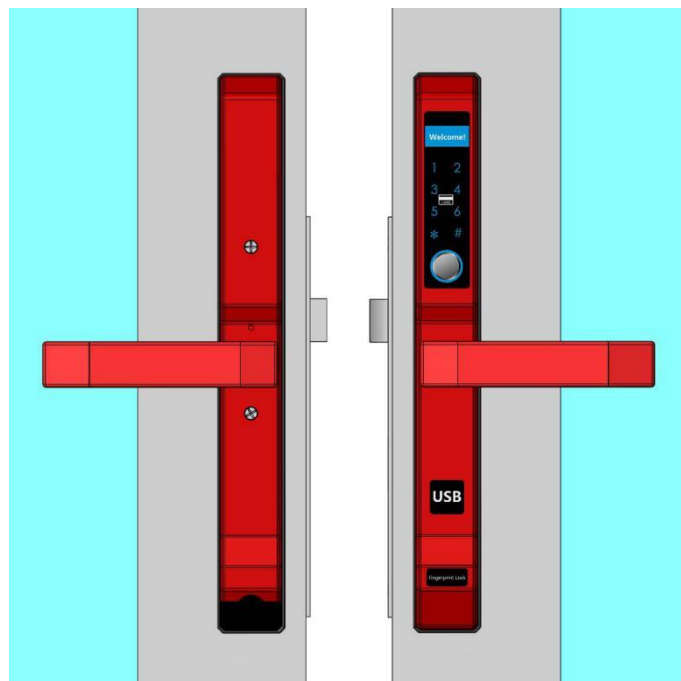
ATT: Read the system operation instructions for more details.



P-8

Step 6: Testing

- Use Fingerprint/card/password/mechanical key to open the door. (P-9)



P-9

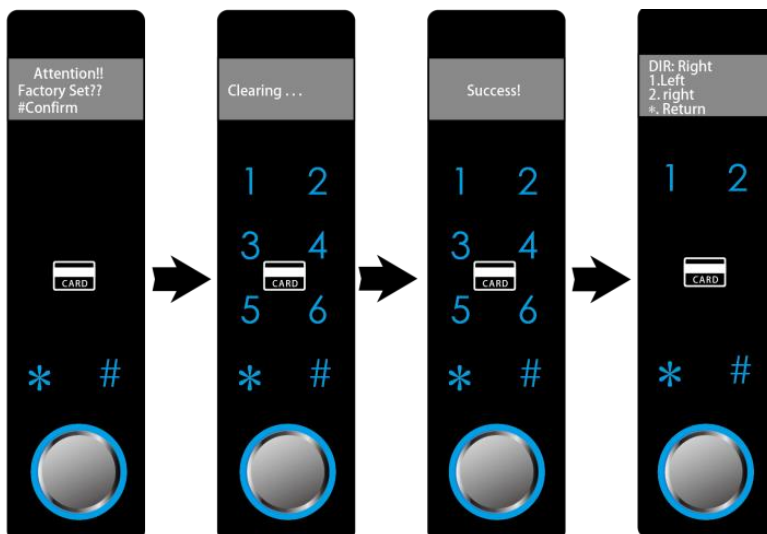
4. Operation Instructions

1. Factory mode and Enter the settings

1. 1. Factory mode

1. 1. 1. Press the reset button, after hear 10 times "bi...bi...bi...bi...bi----bi...bi...bi...bi...bi", release the button, the screen displays "Attention!! Factory Set??#Confirm".
1. 1. 2. Press "#" to clear all the settings. After seeing "Clearing...", wait until it displays "Success".
1. 1. 3. After it return to factory mode, the screen display "DIR: Right 1. Left 2. Right *.Return", please confirm the direction of the handle and exit the settings.

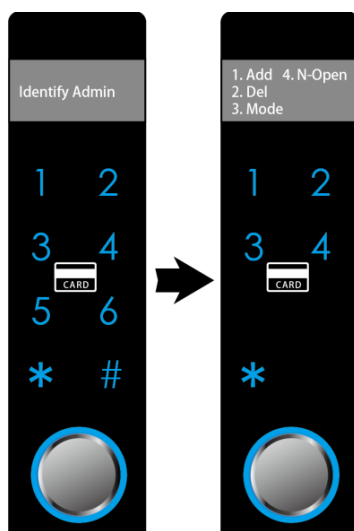
ATT: The factory mode password is "123456" and any fingerprints can open the lock.



1. 2. Enter the settings

1. 2. 1. Factory mode: Press the reset button, after hear 5 times "bi...bi...bi...bi...bi", release the button and the screen displays "1.Add 2. Del 3. Mode 4. N-Open".
1. 2. 2. Registration mode: Press the reset button, after hear 5 times "bi...bi...bi...bi...bi", release the button and identify the administrator fingerprint, and the screen displays "1.Add 2. Del 3. Mode 4. N-Open".

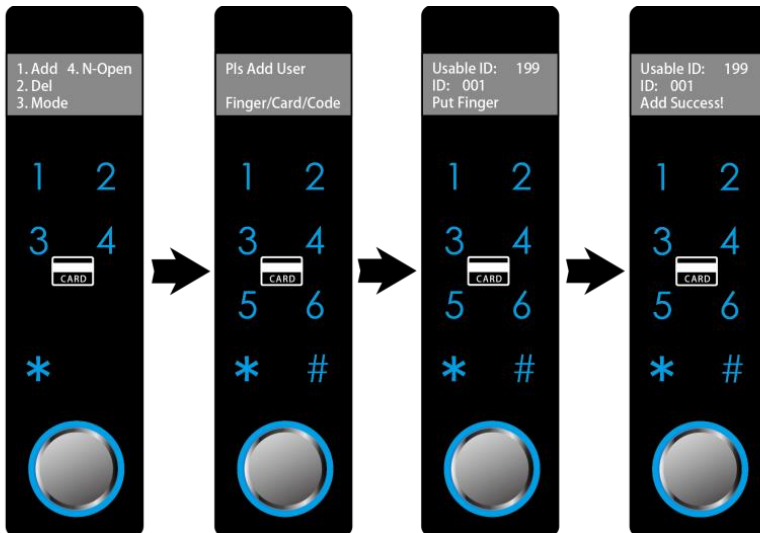
ATT: The first 3 fingerprints that are registered are the administrator fingerprints. The system needs to verify the administrator fingerprint after them have been registered.



2. Add administrator fingerprint, user fingerprint, ID card or Password

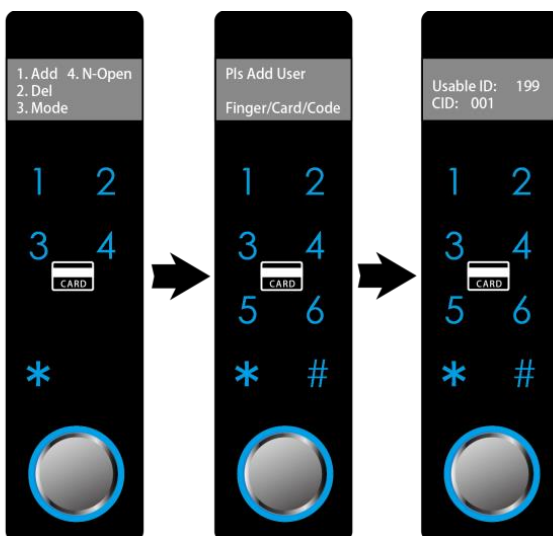
2.1. Add administrator fingerprint and user fingerprint

- 2.1.1. Select "1", enter the registration interface, "Pls Add User, Finger/Card /Code".
- 2.1.2. Put the same fingerprint on the fingerprint reader for 3 times, "Usable ID : 199, ID: 001, Put Finger". When it displays "Usable ID : 199, ID: 001, Add Success!", the fingerprint has been registered.
- 2.1.3. After that you can keep adding fingerprint without exit the system.
- 2.1.4. Select "*" to exit.



2.2. Add ID card

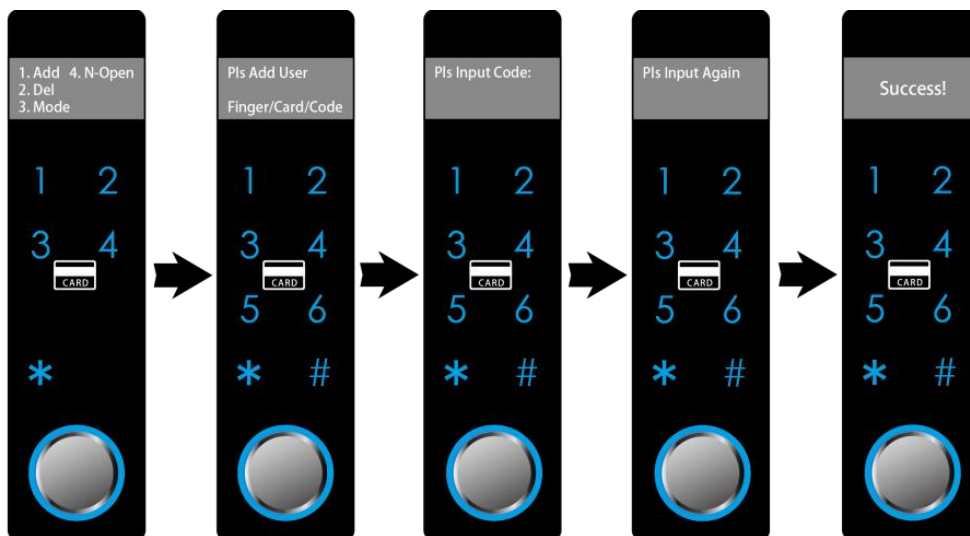
- 2.2.1. Select "1", enter the registration interface, "Pls Add User, Finger/Card /Code".
- 2.2.2. Put IC card on the sensor area, when it displays "Usable ID : 199, CID: 001", ID card has been registered.
- 2.2.3. After that you can keep adding cards without exit the system.
- 2.2.4. Select "*" to exit.



2. 3. Add password

2. 3. 1. Select "1", enter the registration interface, "Pls Add User, Finger/Card /Code".
2. 3. 2. Press any number on the panel, the screen will displays "Pls Input Code:", And then enter the code and select "#" to confirm.
2. 3. 3. "Pls Input Again", input the same code again and select "#" to confirm, until it display "Success!"
2. 3. 4. Select "*" to exit.

ATT: The number of password is 6-12 digits. The capacity of the code is only one group. If you keep adding the new code, the new one will replace the old one automatically.

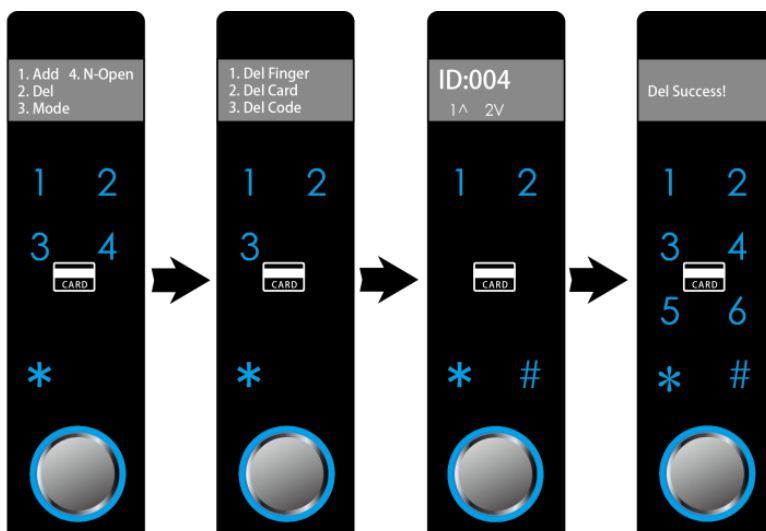


3. Del user fingerprint, ID card and password

3.1. Del user fingerprint

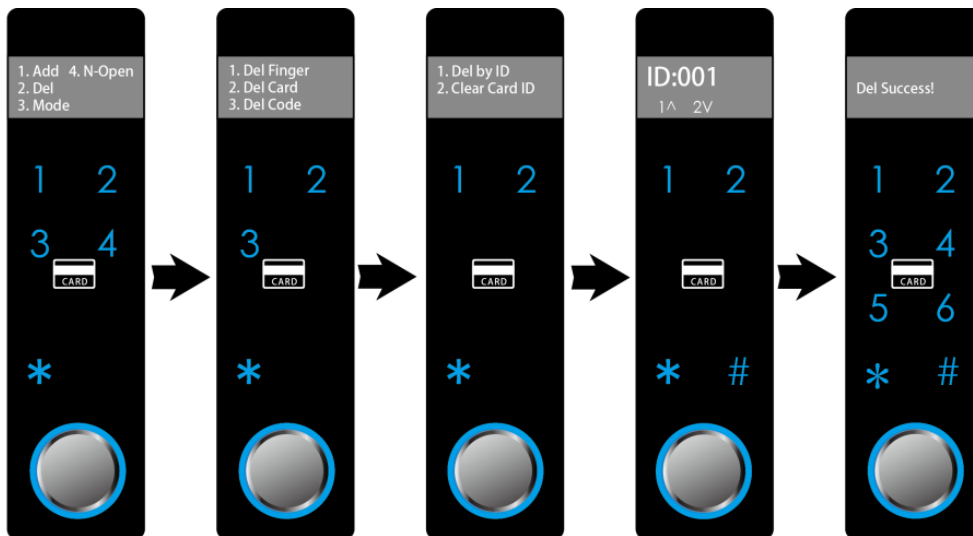
3. 1. 1. Select "2", enter the Del interface, "1.Del Finger, 2. Del Card, 3. Del Code".
3. 1. 2. Select "1", choose the number of the fingerprint which start from "ID 004" and delete it .

ATT: The administrator fingerprint cannot be deleted, unless reset the system.



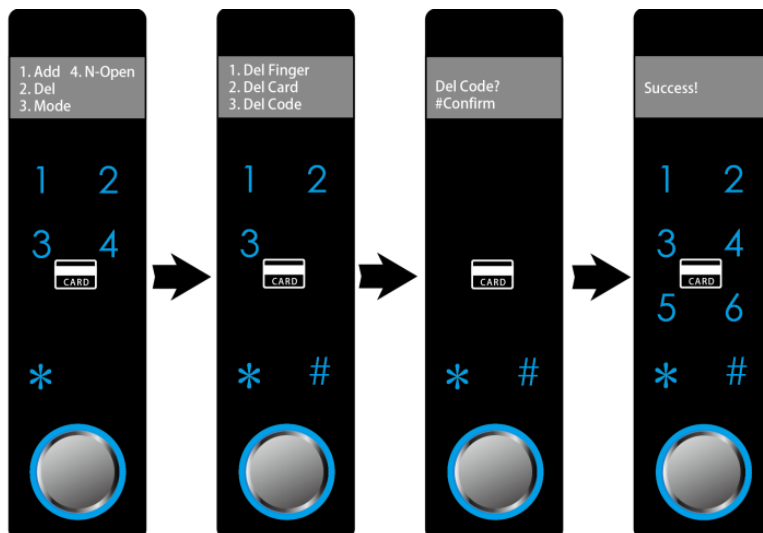
3.2. Del ID card

3. 2. 1. Select “2”, enter the Del interface, “1.Del Finger, 2. Del Card, 3. Del Code”.
3. 2. 2. Select “2”, choose the number of the card and delete it or delete all the cards.



3.3. Del password

3. 3. 1. Select “2”, enter the Del interface, “1.Del Finger, 2. Del Card, 3. Del Code”.
3. 3. 2. Select “3”, delete the code.



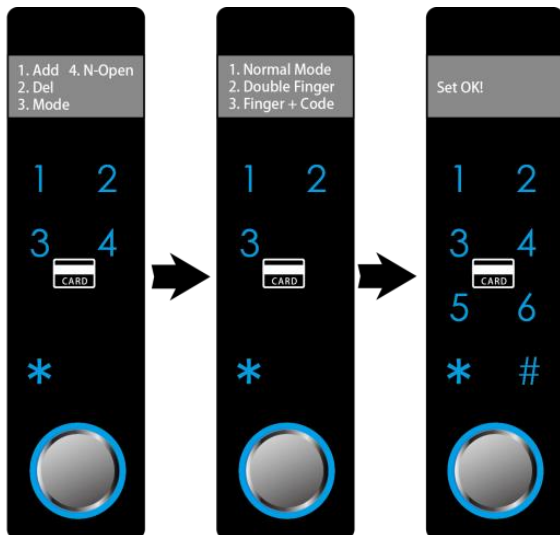
4. Identify Mode

4. 1. Select “3”, enter the Mode interface, “1. Normal Mode, 2. Double Finger, 3. Finger + Code”.

Select “1”: open the lock with one fingerprint or one ID card or code. (Standard mode)

Select “2”: open the lock with double fingerprints mode.

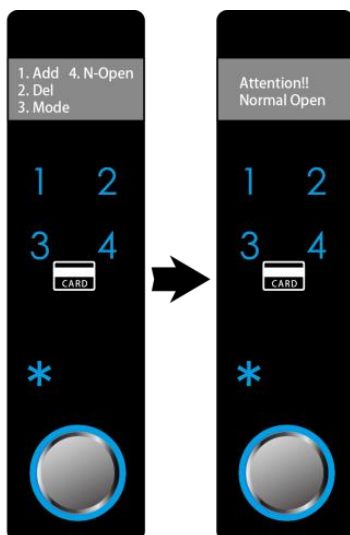
Select “3”: open the lock with one fingerprint + one code mode.



5. N-open mode

5.1. Select “4”, “Attention!! Normal open”.

ATT: After choosing this mode, the lock will keep open until you enter fingerprint or ID card or code to return to the normal mode.



6. Opening ways

6.1. Fingerprint:

Put your finger on the fingerprint reader -- blue light turns on and one beep sounded -- turn the handle to open.

6.2. ID Card:

Put ID card on the sensing area -- blue light turns on and one beep sounded -- turn the handle to open.

6.3. Password:

Touch the keypad to activate the screen-- press the dynamic code that light up -- input the password -- press “#” to confirm -- blue light turns on and one beep sounded -- turn the handle to open.

6.4. Double fingerprints:

Put 2 different registered fingerprints -- blue light turns on and one beep sounded -- turn the handle to open.

6.5. Fingerprint + Code:

Read registered fingerprint -- input password -- press “#” to confirm -- blue light turns on and one beep sounded -- turn the handle to open

6.6. Use mechanical key.



Fingerprint
(capacity:200)



RFID Card
(capacity:200)



Password
(capacity:1)



Mechanical key
(Emergency use)

5. After Sale & Support

1. Thank you for using this product. The product will be guaranteed within 1 year since the date of purchase. If the product fails or damages due to quality problems, please send it to the designated service point or distributor in time.

2. Failure or damage caused by human factors such as self-disassemble or improper use is not covered by the warranty.

6. Mortise Lock List



Single-Point



Multi-Points



T35



Hook Single-Point



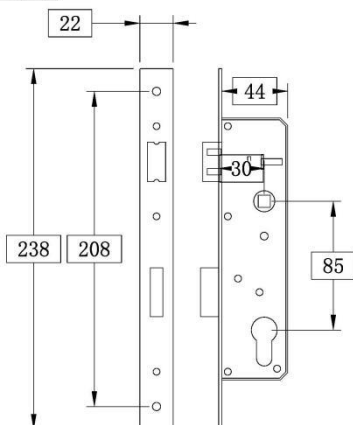
Hook Multi-Points

S238-3085

1



S238-3085

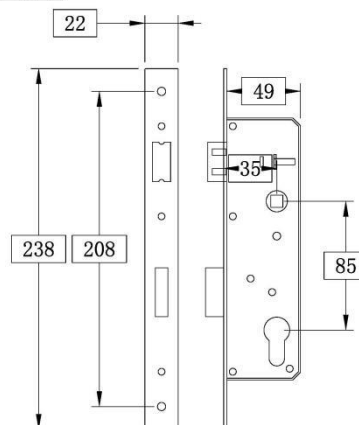


S238-3585

2



S238-3585

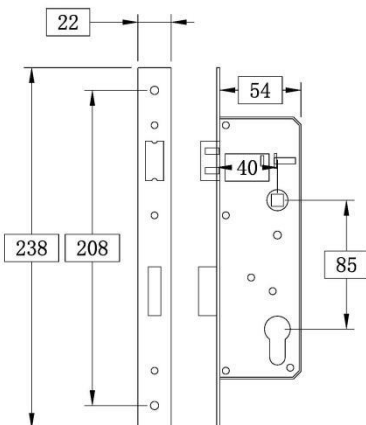


S238-4085

3



S238-4085

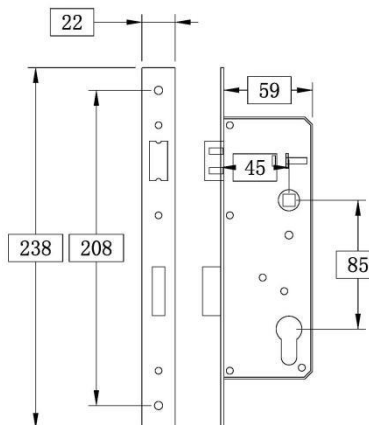


S238-4585

4

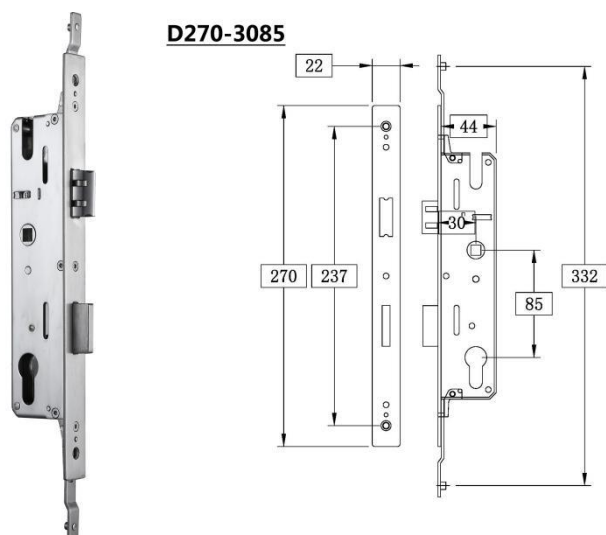


S238-4585



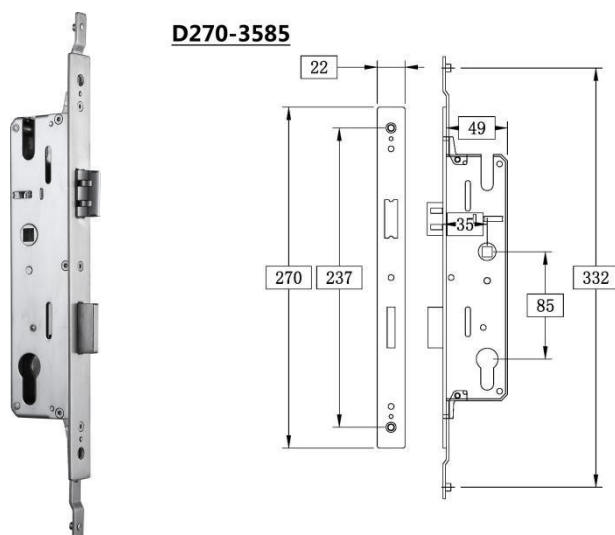
D270-3085

5



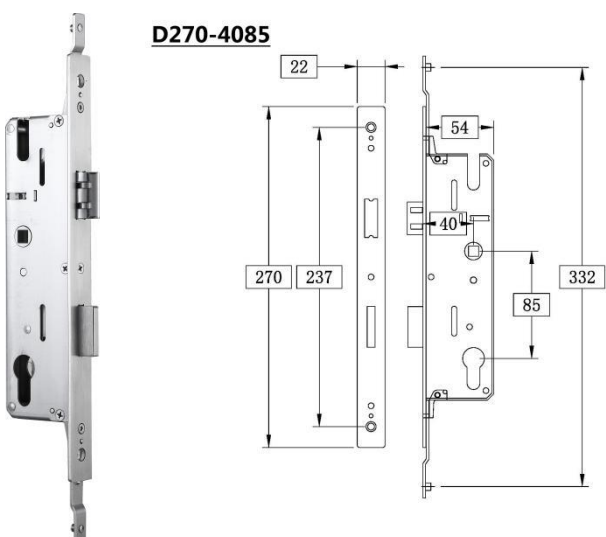
D270-3585

6



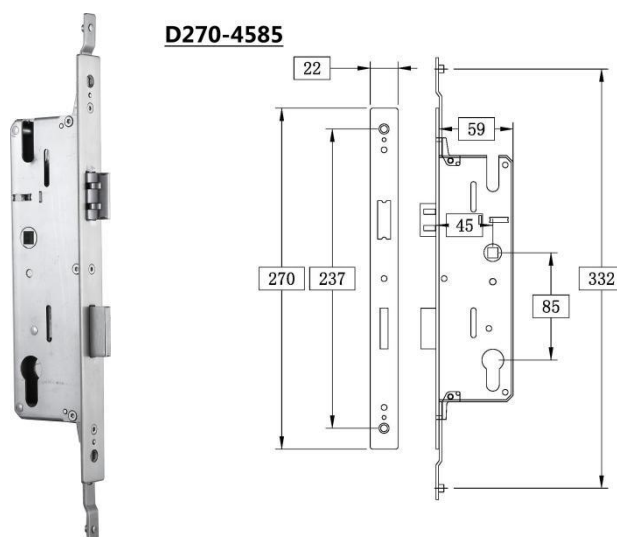
D270-4085

7



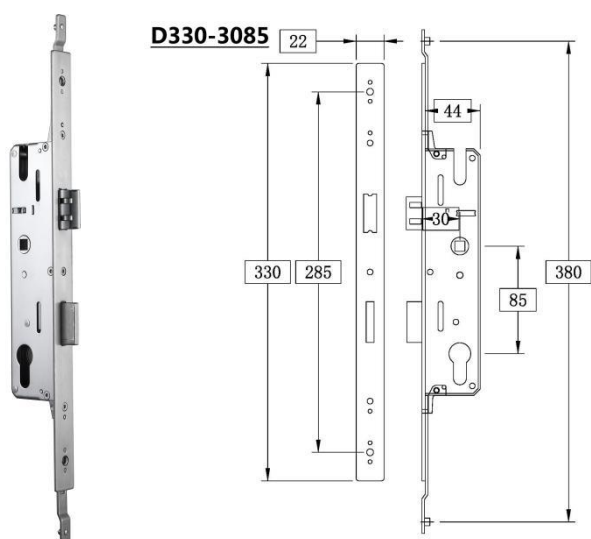
D270-4585

8



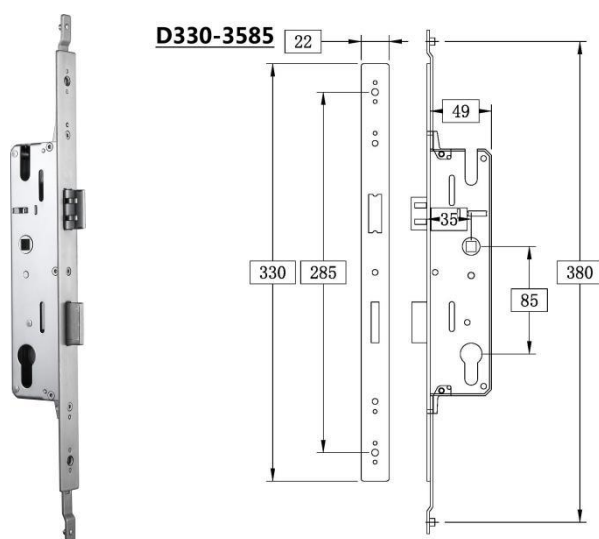
D330-3085

9



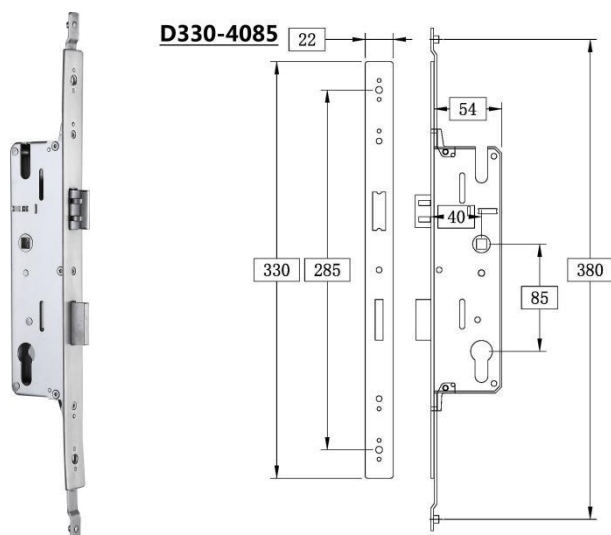
D330-3585

10



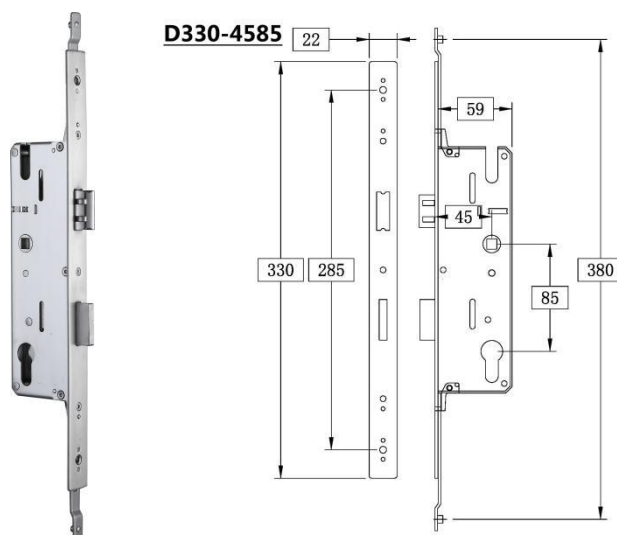
D330-4085

11



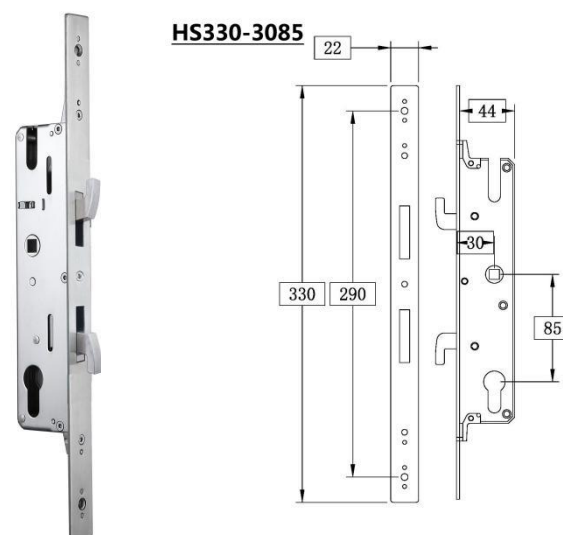
D330-4585

12



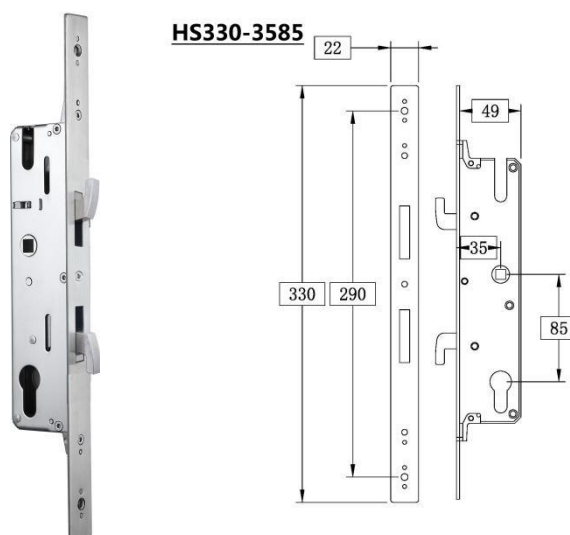
HS330-3085

13



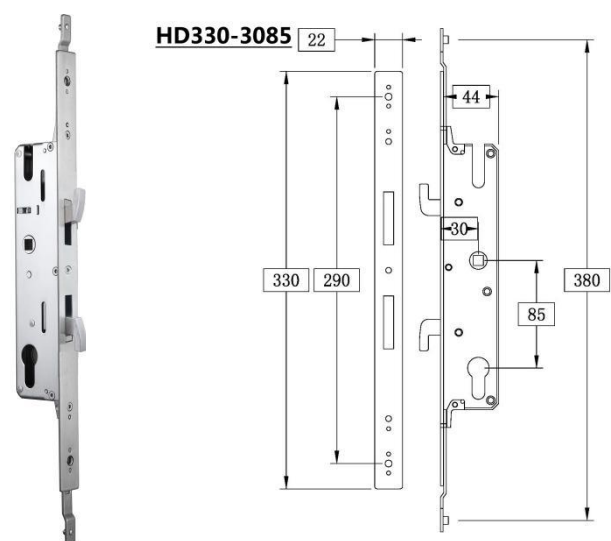
HS330-3585

14



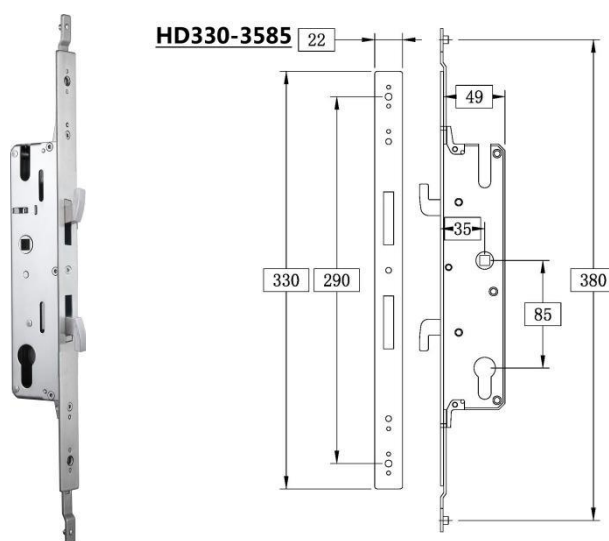
HD330-3085

15



HD330-3585

16



**T35**